

ing, while the doubled pawns control important squares in the centre. The game might continue:

22...♙e6 23. ♖xe6 fe 24. ♜xf8+ ♗xf8 25. ♜f1+! ♗g8 26. ♜d1±;

22...♙g4 23. ♜f4 ♙h5 24. g4 ♙g6 25. h4 h5 26. ♖h2 ♖h7 27. ♜g1 f6 28. gh ♙xh5 29. e5!±;

23...b6? (which was played in the actual game) 23. ♜d1 ♗g6 24. ♜d6 ♙a6 25. ♜f2 ♙b5 26. e5 ♗e7 27. e4 c5 28. e6 f6 29. ♜xb6 ♙c6 30. ♜xc6 ♗xc6 31. e7+ ♜f7 32. ♙d5. Black resigned.

40th lesson

No. 1

31. ♗f7! ♜e8. Black has to surrender a pawn, whereas after 31... ♖xf7 it is mate: 32. ♜h5+ ♖e7 33. ♜xe6+ ♖xe6 34. ♜e1+ ♖d6 35. ♜c5+ ♖d7 36. ♜f5+ ♖d6 37. ♜e6#.

32. ♜xe6 ♜xe6 33. ♗d8 ♜e4 34. ♗xc6.

No. 2

28. ♙d1! c6. The threat of g4-g5 is quite unpleasant, for example, 28... ♜f8 29. g5! f5 30. ef gf 31. ♙e2 or 28... h6 29. g5! h5 30. gf+ ♖xf6 31. ♙e2 c6 32. dc ♙xc6 33. f4 ♖g7 34. f5.

29. dc ♜xc6 (29...♙xc6 30. g5! ♙b7 31. gf+ ♖xf6 32. ♙g4 ♜xc3 33. ♜xc3 ♜d8 34. ♜xb5 ♙xe4 35. a4 h5 36. ♙h3) 30. ♜xb5 (30...♜ec8 31. ♗d5 ♜xc3 32. ♜xd7+ ♗xd7 33. ♜xc3+-). Black resigned.

No. 3

16...♗a3+ 17. ♖a2 b5! This enables black to build a strong attack.

18. g5 ♗d7 19. ♗d5 (19. ♙xb5 ♗xb5 20. ♗xb5 ♜xc2 21. ♜xc2 ♜xc2) 19...♙xd5 20. ♜xd5 ba 21. ♖xa3 ab 22. ♖xb3 a4+ 23. ♖a2 a3 24. ba ♗b6 25. ♜b5 ♗a4 26. ♜b3 d5! 27. ed ♗c3+ 28. ♖a1 ♜cb8 29. d6 ♙xd6. White resigned.

41st lesson

No. 1

17. dc bc 18. b5! The black passed pawn is not dangerous, whereas white has the chance to create a distant passed pawn.

18...a6 (18...♗xe5 19. ♙xe5 ♜d7 20. ♗b3!) 19. a4 ab 20. ab ♜a7 21. ♗ec4! with much better play for white.

No. 2

28. ♗a4! bc 29. b6! ♜b8 30. ♗c5. Having sacrificed a pawn white has gained a strong passed pawn, which black will soon have to exchange for a piece.

No. 3

38. ♙xg7+! ♗xg7 (38...♜xg7 39. ♜xf8+ ♗xf8 40. b8♜) 39. ♜xf8! ♜xf8 40. ♜d8 ♗e6 41. ♜xf8+ ♗xf8 42. b8♜ ♖g7 43. ♜a7+ ♖h6?! 44. ♜f7! Black resigned.

42nd lesson

No. 1

35. ♖c3+ ♔d7 (35...♙b8 36. ♗c5 ♙a7 37. ♘b2! ♘e5 38. ♘a4 ♘c4 39. ♘xb6 ♘xb6 40. ♖c3+- or 37...♚d8 38. ♘a4 ♚dd6 39. ♘xb6 ♚xb6 40. f4+-) 36. ♘c5+ ♙d6 37. ♘xb7+! ♙d7 38. ♖c5! ♚xb7 39. ♖c6+ ♙e7 40. ♖xb7+ ♙f6 41. b6 d4 42. ♖c7 d3 43. ♙f1 ♘e5 44. b7. Black resigned.

No. 2

34...a4! 35. ba b3! 36. ab ♖xb3+ 37. ♙c1 ♙h6+ 38. ♚dd2 ♖xa4 39. ♙e5 ♙h7 40. ♙c3 ♖b5! 41. ♙d4 ♖e2 42. g4 ♖e1+ 43. ♙b2 ♙xd2 44. ♚c8 ♙c1+. White resigned.

No. 3

32. ♚xg6! ♘f5 (32...♖xd8 33. ♗g7+) 33. ♚f6+ ♙g8 34. ♚xe8+ ♖xe8 35. ♚xf5 e3 36. ♚e5. Black resigned.

43rd lesson

No. 1

42. ♚a5! The hurried 42. a7?! ♖g2+ 43. ♙b3 (or 43. ♙d1 ♖f3+ 44. ♙d2 ♖g2+ 45. ♙e3 ♖h3+ 46. ♙d4 ♖g4+ 47. ♙d5 ♖f3+) 43... ♖d5+ 44. ♙c2 ♖g2+ leads to a draw by perpetual check.

42...♖a8 (42...♖e2+ 43. ♙b3 ♖xd3 44. a7 ♖d1+ 45. ♙a2) 43. a7 d5 44. ♘b4 d4 45. ♘d5 dc 46. bc ♙g7 47. ♙b3. Black resigned.

No. 2

27. ♚fd1! (white launches a crushing attack on the king) 27... ♖xb2. Let's consider alternative variations:

27...♖xd1+ 28. ♚xd1 ♙xb7 29. ♚d4 ♚xg7 30. ♚xc4 a5 31. ♚f4! ♙b6 32. h4 ♙b5 33. b3+-;

27...♖xg7 28. ♚xa7 ♙b8 29. ♚da1 ♚e8 (29...♖d4 30. ♘a5!! ♖c5 31. ♚b7+ ♙c8 32. ♚xf7) 30. ♘d6 ♚e1+ 31. ♚xe1 ♙xa7 32. ♘xc4±.

28. ♘d6+ ♙b8 29. ♚db1 ♖xg7. It looks like he cannot save the game:

29...♖c3 30. ♚xa7! ♙xa7 (30... ♚xg7 31. ♚b7+ ♙a8 32. ♚7xb4) 31. ♘b5+ ♙a6 32. ♘xc3 bc 33. ♚b4!+-;

29...♖d2 30. ♘xc4 ♖c3 31. ♚a4! b3 32. ♘a5! ♙a8 (32...b2 33. ♚b4+ ♙a8 34. ♚4xb2) 33. ♚a3! ♖xg7 34. ♘c6 ♙b7 35. ♘xa7+-.

30. ♚xb4+ ♙c7 31. ♚a6! ♚b8 32. ♚xa7+ ♙xd6 33. ♚xb8 ♖g4 34. ♚d8+ ♙c6 35. ♚a1. Black resigned.

No. 3

23. ♙xa6! ♚a8 24. ♙xb7 ♚xa4 25. ♘xa4. White has gained a rook, bishop and pawn for his queen. Moreover, black now has weak pawns on b6 and d5, while white has the chance to occupy the c-file after doubling rooks.

25...♘a5 26. ♙a6 ♚a8 27. ♙b5 ♘c4 28. ♚c2 h6 29. ♘c3 ♘a5 30. b4 ♘b7 31. ♘cxd5!! ♘xd5 32.

♖xd5 ♗xd5 33. ♖c7+ ♔f8 34.
♔c4. Black resigned.

44th lesson

No. 1

1...ef? 2. ♗xd4! ♖xe4 3. ♗xg7+
♔xg7 4. ♖xe4 with a very strong at-
tack.

No. 2

Sacrifice it! 23...♗xg4! 24. hg
♖xc5 25. ♖xc8 (or 25. ♖xb7 ♖xb7
26. ♖xd7 ♖e5! 27. ♖d4 b5) 25...
♖xc8. Black's chances are better.

No. 3

28. ♗g4 ♔e8 29. ♖h5! ♖f8 (29...
♖xh5 30. ♗xh5+ ♔f8 31. ♗h8+
♔f7 32. ♗g8# or 30...♖f7 31. ♖g8+
♔f8 32. ♗xc5) 30. ♖xc5! ♔xc5 31.
♗h5+. Black resigned.

No. 4

Yes, white in any case gains three
minor pieces for two rooks together
with an excellent position:

1. ♖xc5! ed (or 1...♗xc5 2.
♖xc6! ♖xd3 3. ♔xc5) 2. ♖xc6! bc
(2...de 3. ♖xb6 ♖xd3 4. ♖xb7 ♖d1+
5. ♔f1) 3. ♔g5 f6 4. ♔c1 ♗b5 5.
♖f4±.

45th lesson

No. 1

26...♖xc4!! 27. ♖xb8 ♖c1+ 28.
♔f1 ♖xb8 29. ♔c3 ♖bb1 30. ♗d3
(30. ♗a8+ ♔f8 31. ♗xa6 ♖e4 32.

g4 ♖xc3 33. ♖xc3 ♖xc3 34. ♔g2
a3) 30...a3! White cannot cope with
the passed pawn.

31. ♗xa6 a2! 32. g4 ♖xf1+! 33.
♗xf1 ♖e4! 34. ♔a1 ♖d2. White re-
signed.

No. 2

24. b4!! White sacrifices his
queen for a rook, thereby gaining
dangerous passed pawns.

24...♖xc6 25. dc (despite his ma-
terial advantage black has nothing
good here) 25...e6. Other replies are
no better: 25...cb 26. b6, 25...♗b6
26. c4! ♖a8 27. ♖a1! ♖xa1 28. ♖xa1
e6 29. ♖a6 ♗c7 30. bc dc 31. ♔xc5.

26. ♖ed1! (26. bc d5 27. b6 d4 28.
c7 ♗e7!) 26...♗b8 (26...cb 27. b6,
26...d5 27. ♔xc5 d4 28. b6) 27. bc d5
28. ed ed 29. ♖xd5 ♗e8 30. c7 ♗f7
31. b6! ♗xd5 32. b7. Black resigned.

No. 3

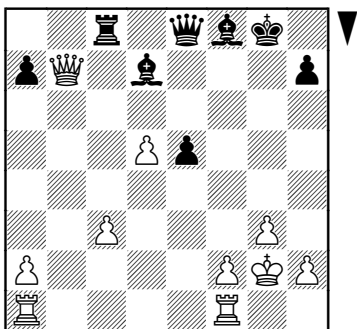
28. cb! ♖e1+ 29. ♖xe1 ♗xb5
30. ba ♗c6 31. ♖b1 ♔h7 32. ♖b8.
Black resigned.

46th lesson

No. 1

The game continued 23. ♔c5?
(23. ♔xa7 f3 24. ♔h1 b5!? leads to
an unclear position, but that was
white's best option) 23...f3 24. ♔xf8
(24. ♔h1 ♖f4! 25.c4 b6 26. ♔e3
♖xc4 27. ♗a3 e4—) 24...♔xf8
25. ♗xb7 fxg2 26. ♔xg2 From the
material point of view white is fine,

but black's strong bishop pair together with the exposed position of the white king will decide the game.



26... ♖f7! 27. ♖ab1

27. ♗b3 e4 28. c4 ♖xc4! 29. ♗xc4

♗f3 30. ♖g1 ♕h3--+

27... e4!?

27... ♖xc3 28. ♖g1 e4 is also good.

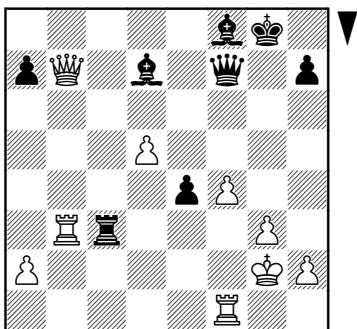
28. f4

28. ♖g1 ♕c5;

28. f3 ♖xc3 29. fxe4 ♖c2 30. ♖h1

♗h5--+

28... ♖xc3 29. ♖b3



29... ♖d3

29... ♖c7! 30. ♗a8 ♖c2 31. ♖f2 ♕h3 was even stronger. He could also have played 29... ♖c2 30. ♖f2 ♕h3 31. ♖xh3 ♗xb7 32. ♖xb7 ♗xf2 33. ♖xa7 e3 34. ♖a6 e2 35. ♖e6 ♕b4. 30. f5 Desperation. 30... ♖d2 31. ♖f2 ♖xf2 32. ♖xf2 ♗xf5 33. ♖e1 ♕c5 ... White resigned.

No. 2

46. d4!! (46. ♖c7 ♖a8 and 46. ♕b6 ♖e8 are less clear) 46... f4 47. d5 e3 48. ♕e1 f3 49. ♖c7! ♖f8 (49... ♖a8 50. d6) 50. d6 ♖f4 51. ♕c3+ ♖h7 (51... ♖f8 52. d7 ♖xc4+ 53. ♖d6) 52. ♕d3. Black resigned.

No. 3

46. ♖c3! (46. a5 ♕d6 47. ♖d4 ♕xe4! 48. ♖xe4+? ♖f5) 46... ♕d6 47. ♖xc6! bc 48. a5 c5 49. a6 ♕b5 50. ♖e3 c4 51. ♖d2 ♖d6 52. ♖e3 ♖e6. Draw.

No. 4

36. ♕hf5! gf 37. ♕xf5 ♕f6 38. ♕xe7 ♕xe7 39. ♖e8 ♕g5 40. ♕xf7 ♖g7 41. ♕b3 ♕f6 42. f4 ♕g6 43. f5 ♕gf8 44. h4 ♖h7 45. ♖h3 ♖g7 46. g4 ♖h7 47. ♕c1 ♕g7 48. g5 hg 49. hg. Black resigned.

47th lesson

No. 1

36... h3+ 37. ♖g1 (37. ♖f2 ♖f5 38. ♖f4 ♗e1#) 37... ♖e1+ 38. ♖f2 ♖f1+! White resigned.

No. 2

41...♖xe5! 42. de (42. ♖xe5 ♗xd4!) **42...♗xe5 43. ♖de1 ♗c7!** (the bishop and two pawns are clearly better than the rook here) **44. ♖e8+** (44. ♖e7 ♗d7) **44...♗g7 45. ♖xd8 ♗xd8 46. ♖d1 ♗b7 47. f4** (47. ♗h3 ♖e5) **47...d4+ 48. ♗f3 d3**. White resigned in view of the following lines: 49. ♖f2 ♖xf5! 50. ♗xb7 ♖g4+ 51. ♖g3 ♖xd1 or 49. ♖xc4 ♖b2+ 50. ♗g3 ♗xf3 51. ♗xf3 ♖e2+.

No. 3

16...♗xf1! 17. ♖xa8 ♗xg2 18. ♖g1 ♗xd5. Black has the advantage as the white pawns are weak.

48th lesson

No. 1

34. ♖xd7! ♖xd7 35. ♗h3 ♖f7 (35...♖e7 36. ♗g4 ♖g5 37. ♖g1 ♗h8 38. ♗d4!) **36. ♗g4 ♖g5 37. ♗e6! ♖fb7 38. ♖g1 ♖d8** (38...♖h5? 39. ♗g4) **39. ♖f1! ♖a6 40. ♖h3 ♖a2 41. ♗e5 ♖d2** (41...g5 42. ♖xh4!) **42. d4 ♖d3 43. ♗f5+ ♗g8** (43...♗h8 44. ♗c8 ♖xf3 45. ♖e6) **44. ♗c8! ♗xf3** (44...♖f7 45. ♗e6) **45. ♖e6+**. Black resigned.

No. 2

28. ♗e7! ♗f5 (28...♖g8 29. ♗f1!) **29. ♗xf6 ♗xg3 30. fg** (material on the board is about equal, but the bishop dominates black's rooks) **30...♖g8** (he would not have

ultimately saved himself with the still better move 30...♗xh5 31. ♗g2 ♗g6 32. ♖f1 e5 33. ♗xe5 ♖a6 34. ♗d6 ♖e8 35. h4 ♖e4 36. ♖f4 ♖e2+ 37. ♖f2 ♖e4 38. ♖d2, where white should gradually win) **31. ♗g2! ♗xh5 32. h3 ♗g6 33. ♖f1 ♗h7** (33...♖a6 34. g4 e5 35. ♗xe5 ♖e6 was more stubborn) **34. g4 b4 35. ♗g3 b3 36. a3 ♖ac8 37. h4 ♖g6 38. h5**. Black resigned.

No. 3

21...♖xd3! 22. ♖xd3 ♗e4 23. ♖d2 (23. ♖d4 ♗c5) **23...♖xc4 24. ♖fd1 ♗d5**. Black has gained good positional compensation for the exchange, taking the initiative away from white.

49th lesson

No. 1

21. ♗xf5! ♗xc3 22. ♗xd6 ♖b8 23. ♗xe4 ♗f6 24. ♗d2! White's pawns are stronger than the piece. He threatens to advance his e pawn.

No. 2

45. ♗xc6! 45. ♗d3 g4 46. hg hg 47. ♖f4 ♖h7 48. ♗f1 g3 is worse, handing the initiative to black.

45...bc 46. ♖xc6 ♖f7 (46...♖a7 47. ♖c8+ ♗h7 48. ♖f5+ was weak, but 46...♖g6 was more stubborn) **47. ♖f5 ♗g7 48. ♖xa6**. White has the advantage and he gradually converted it into a full point.

No. 3

19...♔xg4? 20. ♔xf6! The alternatives are worse: 20. ♖b1 ♗a5+ 21. b4 ♗xb4+ 22. ♔d2 ♗b5!, or 20. ♔xg4 ♖xg4 21. ♖b1 ♗b6! 22. ♖xa3 ♗b4+.

20...♔xe2 21. ♖xe2! ♔xf6 22. ♖b1 ♗a5 23. b4! ♗xb4 24. ♖xa3 ♔xh4 25. ♖c4. With the queens on board and black's king exposed the knight is clearly stronger than the pawns.

50th lesson

No. 1

11. b4!! (11. ♖a3 ♔c5 12. ♖d1 0-0 only leads to equality) 11... ab 12. ♖xb5 d5 (12...♔e7 13. c5 ♗d8 14. ♗a7) 13. ♖d6+ ♖e7 14. c5 ♗a6 15. ♗c2. White threatens a queenside pawn advance, whereas it's not clear how black can untie himself: the white knight has stapled down black's entire position.

15...♖e8 (if 15...♔d7 then 16. a4 followed by b5 and ♔a3 and black's position is extremely difficult) 16. b5 ♗a8 17. ♔f4 ♖xd6 18. ♔xd6+ ♖e8 19. ♔xb8 ♗xb8 20. a4 ♗c7 21. ♖fc1 f5 22. a5 ♖e5 23. c6 b6 24. ab ♗xb6 25. ♖a8 ♖d8 26. ♖b8. Black resigned.

No. 2

27. ♖xb7! (27. ♔xa6? ba 28. ♖xa6 ♖c8 29. ♖b7 ♗d7 is worse) 27...♖xb7 28. a5 ♖c6. 28...♖b8 29. c6 ♖xc6 30. ♖xc6 ♔xc6 31. ♗xc6

♖d2 32. ♔xa6 is also useless, and then: 32...♖xb1 33. ♖xb1 ♖a8 34. ♔b7 ♖xa5 35. ♔c8 or 32...♖xf1 33. ♔xf1 ♖d7 34. a6 ♖d6 35. ♗c7.

29. ♖xc6 ♔xc6 30. ♔xa6 ♖b8. He could have resisted better with 30...♗a8 31. ♔xb7 ♖xb7 (31... ♗xb7 32. ♗d3) 32. ♖a1 ♗a6 33. ♖fb1 ♖g7, although white should win here after 34. ♖a3.

31. ♔b5! (now there is no stopping the avalanche of white pawns) 31...♗c8 32. ♔xc6 ♗xc6 33. a6 ♖g7 34. ♖b4!? ♖d6 35. ♗a4 ♗xa4 36. ♖xa4 ♖c8 37. ♖b4! ♖a7 38. ba ♖a8 39. c6! (39. ♖b7 ♖xa7 40. ♖xa7 ♖xa7 41. ♖a1 ♖f7) 39...♖axa7 40. ♖c1 (40...♖fc7 41. ♖b7 ♖f7 42. ♖xa7 ♖xa7 43. c7). Black resigned.

No. 3

20. f3? ♖d4! 21. ed ♗xd4+ 22. ♖h1 e3! (there was no point in playing 22...♗xa4 23. fe) 23. ♖c3 ♔f6! 24. ♖db1 d2 25. ♗c2 ♔b3 26. ♗xf5 d1 ♗ 27. ♖xd1 ♔xd1 28. ♖c3 e2 29. ♖axd1 ♗xc3. White resigned.

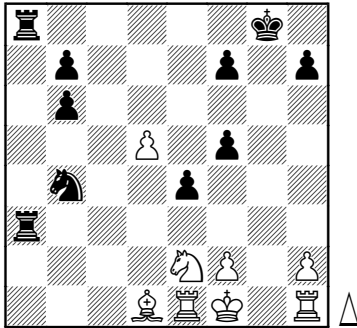
No. 4

Via 15...♖c8 16. ♔b3 ♔xa3!? 16...♖a5 17.gxf5 ♖b5 would have led to an approximately equal battle. The game was played with shortened time control, so black's calculation was fully justified – white is faced with complicated practical problems.

17.bxa3 ♖xc3 18. ♔d1 ♖c6 19.gxf5 exf5 20. ♖e2 ♖cxa3 21.d5

It would have been better to play
 21. ♖g1 ♔f8 22. ♖g5 ♜8a5 23. ♗h5
 ♚g7 24. ♚g2 h6 with an approxi-
 mately equal position.

21... ♞b4

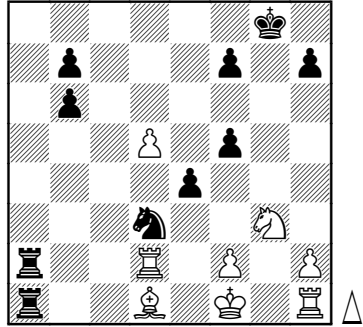


22. ♞g3

He should have activated his pieces despite the material loss: 22. ♞d4
 ♞d3 23. ♖g1+ ♔f8 24. ♞xf5.

22... ♞d3 23. ♖e2

Here too 23. ♞xf5 was better.
 23... ♖a1 24. ♖d2 ♜8a2



25. ♖xa2

His last throw of the dice was
 to play 25. ♚e2 ♞xf2 26. ♖g1 ♜xd2
 27. ♚xd2 e3 28. ♚e2 ♞h3 with good
 drawing chances – the black pawns
 are weak.

25... ♖xa2 26. ♚e2 ♖a1 27. ♚g2
 ♞f4#.